

Santa Marta Anglican Center

2021 Impact Report

05-10-2022

The Santa Marta Anglican Center for LGBTIQ+ Youth and Young Adults is a program of the Anglican Church of El Salvador and CREDHO. We receive tax-deductible donations through our partners in the Episcopal Diocese of Olympia.

ANGLICAN-EPISCOPAL CHURCH OF EL SALVADOR

47 Avenida Sur 723, Apartado (01) 274, San Salvador, El Salvador, CA

E-mail: anglican.es@gmail.com • lgbt.anglican.sv@gmail.com

Tels. +(503) 2223-2252 • 2224-6136 Fax: +(503) 2223-7952

Written by Joseph Russ and Eduardo Madrid

Approved by the Right Reverend Bishop David Alvarado





IGLESIA EPISCOPAL ANGLICANA DE EL SALVADOR

47 Avenida Sur 723, Apartado (01) 274, San Salvador, El Salvador, C.A. E-mail: anglican.es@gmail.com
Tels. (503) 2223-2252 • 2224-6136 Fax: (503) 2223-7952

San Salvador February 11st, 2022

Dear friends, Peace and Wellbeing.

As Bishop of the Anglican Episcopal Church of El Salvador and head of the Santa Marta Anglican Center, on behalf of all the beneficiaries, the program's team, and myself, I address all those people who in one way or another have supported the work of the Anglican Center, especially Bishop Greg Rickel of the Diocese of Olympia, expressing my gratitude for their donations.

Thank you to our strategic partners The Ali Forney Center, ASPIDH Arcoíris Trans, Casa Frida, Espacios Seguros, San Rafael Hospital Safe Clinics, International Organization for Migration, and The Episcopal Diocese of Olympia, for helping us launch the Santa Marta Anglican Center for LGBTIQ+ Youth and Young Adults in August 2021.

Thank you to the LGBTIQ+ youth and young adults for having confidence in our program and giving testimony through their stories of the care received at the Center, where many of the young people are already in more hopeful living conditions and with a better quality of life.

Once again, I thank you for your support, which has had a great impact on the lives of our beneficiaries and on our Salvadoran society.

May the Holy Trinity bless all of you in the love of Christ.

Sincerely,

The Rt. Rev. David Alvarado
Diocesan Bishop
Episcopal Anglican Church of El Salvador

“creemos en la iglesia una, santa, católica, y apostólica”

Summary

In 2021, thanks to the generosity of people around the world, we launched the Santa Marta Anglican Center for LGBTIQ+ Youth (CASM) in August 2021. From August to December of the same year, we attended 12 cases remotely, and 8 cases in the refuge. 5 of those have graduated from the program with work and stable housing. Included with photos from the Center are the words of our users about their experience.

Mission

Provide immediate, comprehensive, and warm care to LGBTIQ+ young adults facing domestic violence, homelessness, and deportation in El Salvador.

Vision

To be a center of attention, community, inclusion, and prosperity that promotes rights for LGBTIQ+ youth, and to contribute to ending the cycle of violence and the social construction of hatred against sexual diversity.

Anticipated Results

I. Short-term Results

- A. LGBTIQ+ youth and young adults expelled from their homes find refuge and safety at the Center
- B. LGBTIQ+ youth and young adults participate in an empowerment process generated by Center staff
- C. LGBTIQ+ youth and young adults are linked to programs inside and outside the shelter according to their skills and interests

II. Long-term Results

- A. The cycle of violence and poverty caused by homelessness is broken
- B. Graduates of the Center's program contribute to the maintenance of the home through donations or volunteering (5 years)
- C. Users can find a community of celebratory faith in the IAES (optional)

Our Work

We interrupt the cycle of violence for LGBTIQ+ youth from 18 to 30 years old. Through **Five Pillars of Accompaniment**, we help clients while they build a caring community and collaborate to find sustainable options.

Five Pillars of Accompaniment



Refuge

Meet emergency needs and provide shelter, safety, food, loving community, and hygiene.



Psychosocial Accompaniment

Provide attention to users with evaluation before entering, crisis care and continuous support after leaving.



Empowerment

Equip users with information on human rights, health, and sexual diversity.



Vocational insertion

Provide job coaching, help with resumes and support to find work and housing.



Pastoral Care (optional)

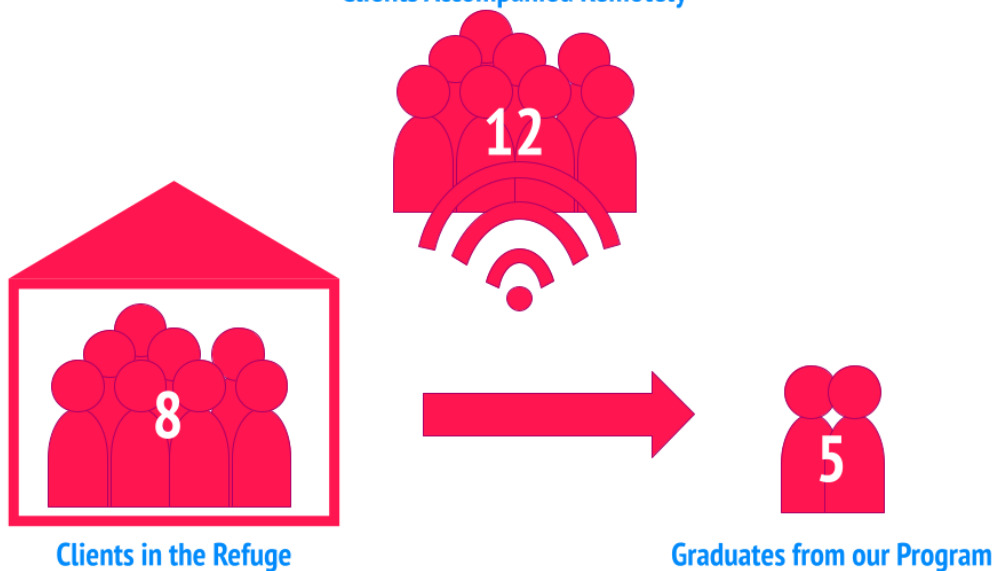
Explore queer theology and support clients as they grow in a faith that celebrates their identities.

“Even though I only stayed a month, I felt the necessary support from the entire team.”

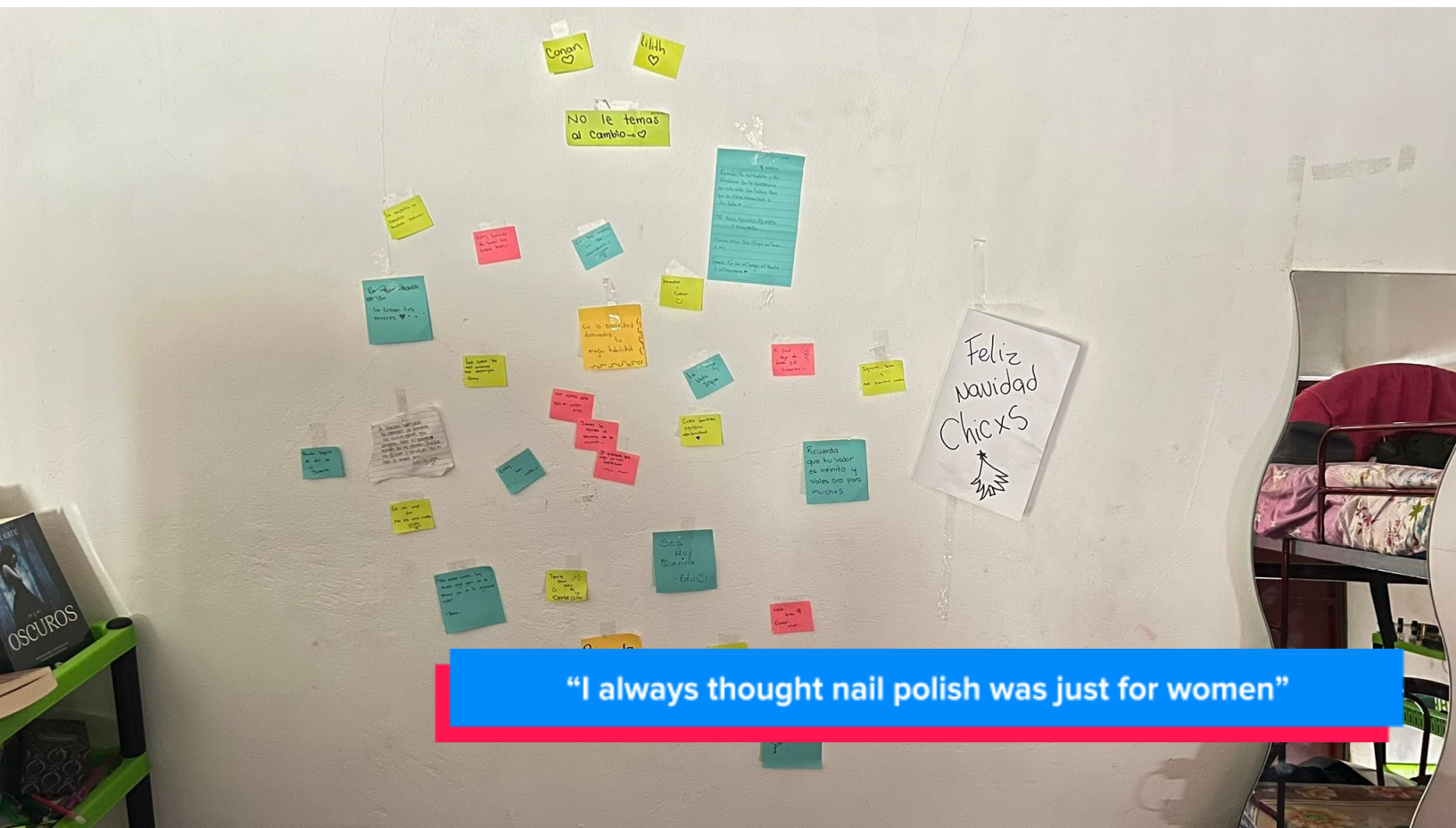


2021 Impact

Clients Accompanied Remotely*



*Clients served remotely have a more stable housing situation, and have not entered the refuge program, but receive support under the other pillars. Our staff evaluates each case to identify their particular needs and develop a support plan according to their profile.



Mental Health

Before entering the shelter, we carry out a mental health examination to organize clients' information and analyze each case. After the process in the shelter, a post-assessment revealed significant progress for all 8 clients in 5 aspects of mental health according to the CASIC evaluation (Behavioral, Affective, Somatic, Interpersonal, Cognitive).

Before Joining the Center

Conductual	Work difficulties, unhealthy sexual behaviors, changes in habits, lack of interest in hobbies, etc.
Affective	More unhealthy feelings (anxiety, negativity, insecurity, etc.).
Somatic	More harmful bodily expressions of emotions (dizziness, cold sweats, gastritis, tension, upset stomach, etc.)
Interpersonal	More inadequate relationships with friends, family, and community. Lack of conflict resolution skills.
Cognitive	Intrusive thoughts, irrational internal dialogue, paranoid ideations, changes in beliefs, etc.

After 2 Weeks in the Center

Restoration of routines, good nutrition, renewed interest in activities, healthy sexual behaviors.
Better understanding of feelings, regulation of emotions, and their healthy expression.
Comfort, relaxation, lack of these harmful bodily manifestations.
Strengthening interpersonal ties, conflict resolution skills,
Ability to identify their thoughts, generate alternative thoughts, and develop new solutions so as not to be paralyzed.

"I've always thought of God as a man, but I now see that God can be non-binary."





Visibility

The media can promote new stories about sexual diversity and raise awareness of our services. We had our 1st press conference in November and the [Washington Blade](#) published an article about the Center in October.

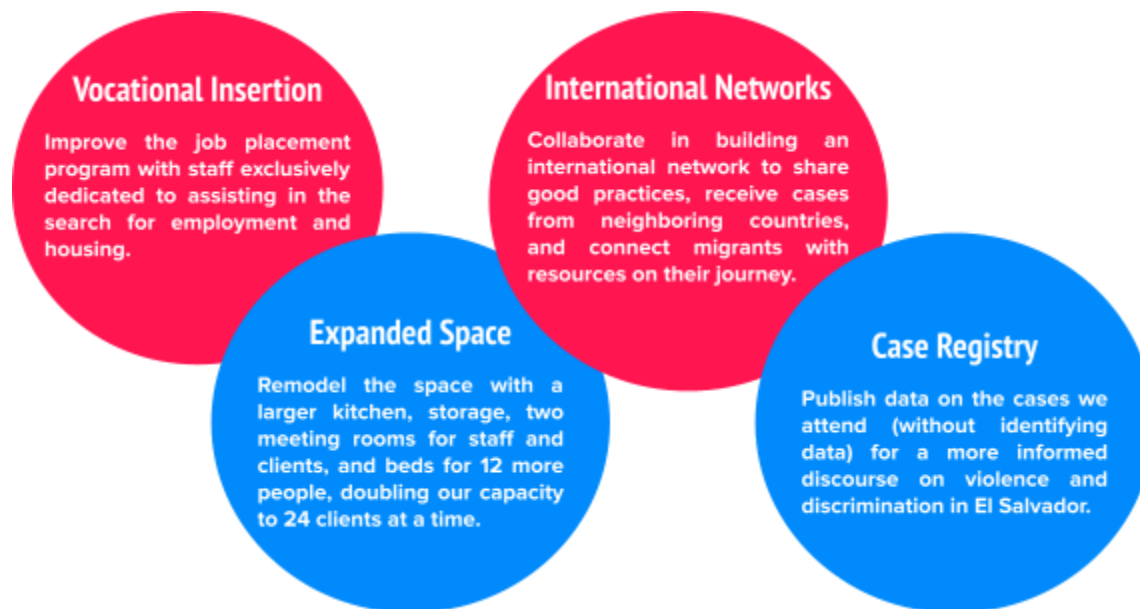
Alliances

Salvadoran organizations provide financial support, in-kind donations, training, and visibility. In the US, organizations and individuals provide financial support, in-kind donations, and consulting. Other organizations in Latin America connect us with potential cases and can support LGBTIQ+ migrants.



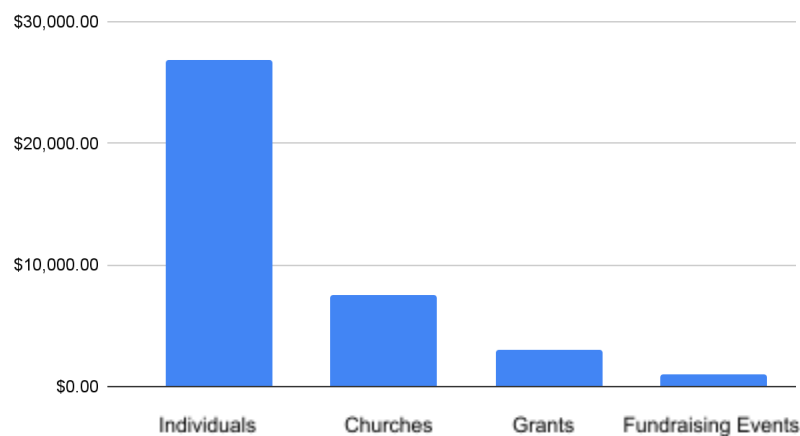
For 2022

To apply the lessons we've learned and expand our program to help more LGBTQ+ youth, **we're raising an additional \$70,000 for 2022** and expanding our services with the following changes:



2021 Donations by Donor

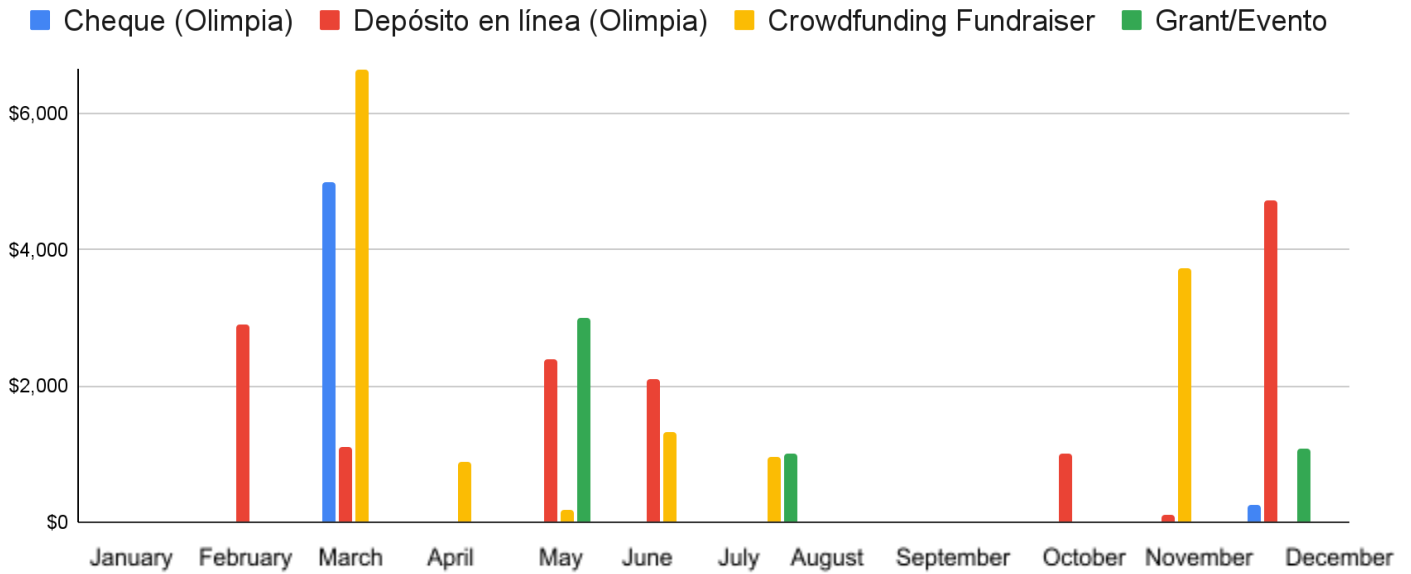
In 2021, we received \$38,411.00 in donations from 142 generous individuals, churches, and foundations. More than 65% of these donations were from individuals, and the average of these individual donations was around \$175.00 per donation, with **44% of said donations being \$50 or less**. Every donation, no matter its size, can have a big impact.



"Contacting the Center has been the best decision of my life"



2021 Donations by Source by Mont

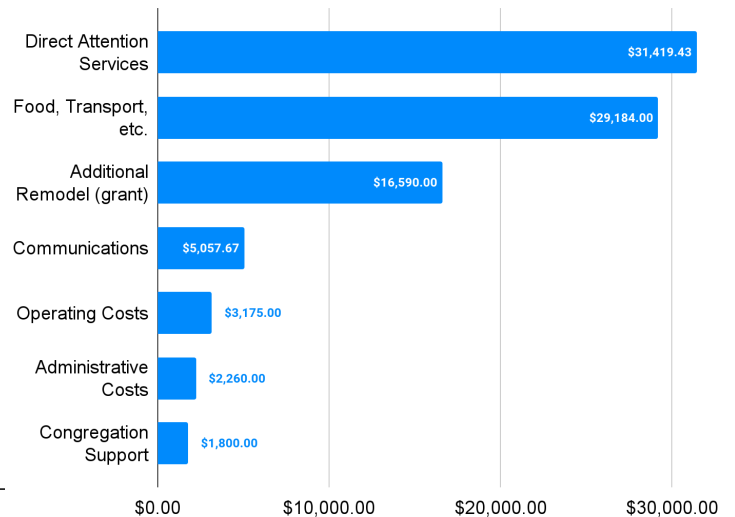
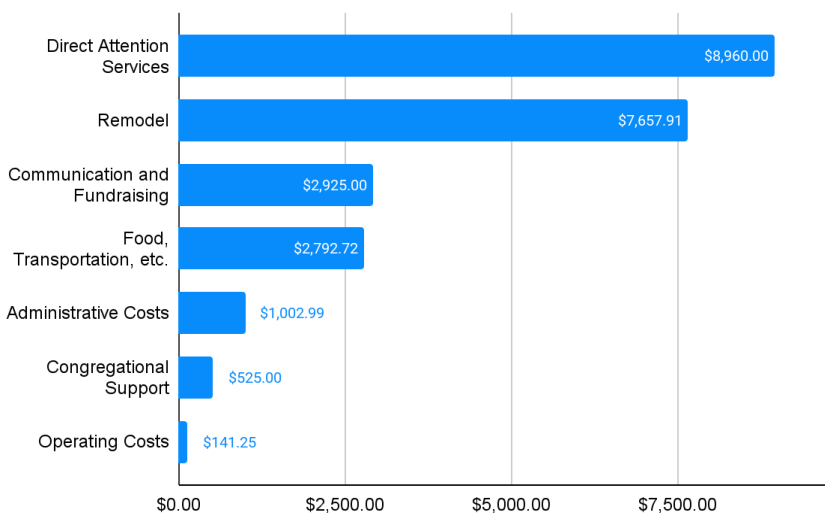


2021 Expenses

Your support has already made an impact on the life of each client; **80% of donations** went to services providing direct care, remodeling the space, food, and materials directly benefiting users. The remaining 20% went to communications, administrative costs, and to support the congregation that hosts us and covers utility costs. A breakdown is available on [our website](#).

2022 Budget

For **2022**, we are raising **\$70,000** to invest more in services that directly benefit riders, and seeking grants to expand space and improve security and privacy. For more information, see [our website](#).



Thank you

Thank you to the incredible people and partner organizations that have supported this work. This includes financial donations, in-kind donations (for example, food, beds, personal hygiene products, and consulting), and formal partners with whom we work to serve users. This work would be impossible without you.

Financial Donations

Adam Enright	Edwin Ramirez	Lee Crawford	Rev. Whitney DeVine
Alex Ramos	Ellen Russ	Leeann Culbreath	Richard Edwards
Andre Gutfreund	Evan Azcuna	Lissett Fundora	Robert Stevens
Andrea Rodriguez	Faraz Abidi	Living	Rose Sol
Anilu Chadwick	Grant Gigot	Lutheran World Federation	Ryan Kupyn
Asiya Karapetian	Guillermo Fernández	Mack Olson	Samuel Juárez
Austin Gonzalez	Heather McNabb	Magdalena Richardson	Samuel Klein
Bowen Baker	Heather Miki	Mark Heaney	Sara Garcia
Brady Mabe	Helen Skouteris	Matthew Morecroft	Sarah Faizsaket
Brianna Brannan	Inclusive Louisiana	Matthew Myers	Sexual Diversity Ministry IAES
Carl Siciliano	James Thomas	Max Sherman	Shannon Manning
Alexander Chernick	Jamieson Jann	Michelle Ja	Soffía Castro
Chris Bhutani	Jeannie Gould	Michelle Moore	Stephen Dukenski
Chris Colon	Jim Burklo	Mike Angell	St. Mark's Cathedral
Chris McNabb	Joan Brown	Nader Batal	Sushi Au
Chuck Stewart	Joan Weber	Paden	The Rev. Frederick Jessett
Church of the Holy Communion	José Reyes	Pamela Bradburn	The Rev. Joshua Hosler
Cindy Mackey	José Rosa	Peter Veitch	The Rev. Keith Dorwick
Cora Causey	Joseph Nuber	Rachael Delashmit	Tiana Austel
Corrina Elder	Joseph Russ	Rachel Crosbie	Veronica Reyna
Cristian Schlick	Joy Ming	Rev. Carlos Caguiat	Will Anderson
Damaris De Jesus	Joyce Parrymore	Rev. Carol Hosler	Willem Vorster
Daniel Tuchman	Julia Wright	Rev. Charles Danzey	William Anderson
David Rutledge	Kathya Aguilar	Rev. Edith Weller	
Deborah Kilmer	Katie Causey	Rev. Esther Poirier	Donations In-kind
Dustin Wilson	Katrina Kaiser	Rev. Jerry Shigaki	The Ali Forney Center
Eduardo Esquivel	Kendall Martin	Rev. Richard Bentley	Canadian Embassy
Eduardo Rivera	Kerry Allman	Rev. Robert Carver	Cristosal
Edward Finan	Kevin Crink	Rev. Stina Pope	Jacob Thomas

Partners

The Ali Forney Center

ASPIDH Arcoiris Trans

Casa Frida

Espacios Seguros

San Rafael Hospital Safe Clinics

International Organization for Migration

The Episcopal Diocese of Olympia



“They have provided me with many services such as psychosocial support and very soon I will find a job”